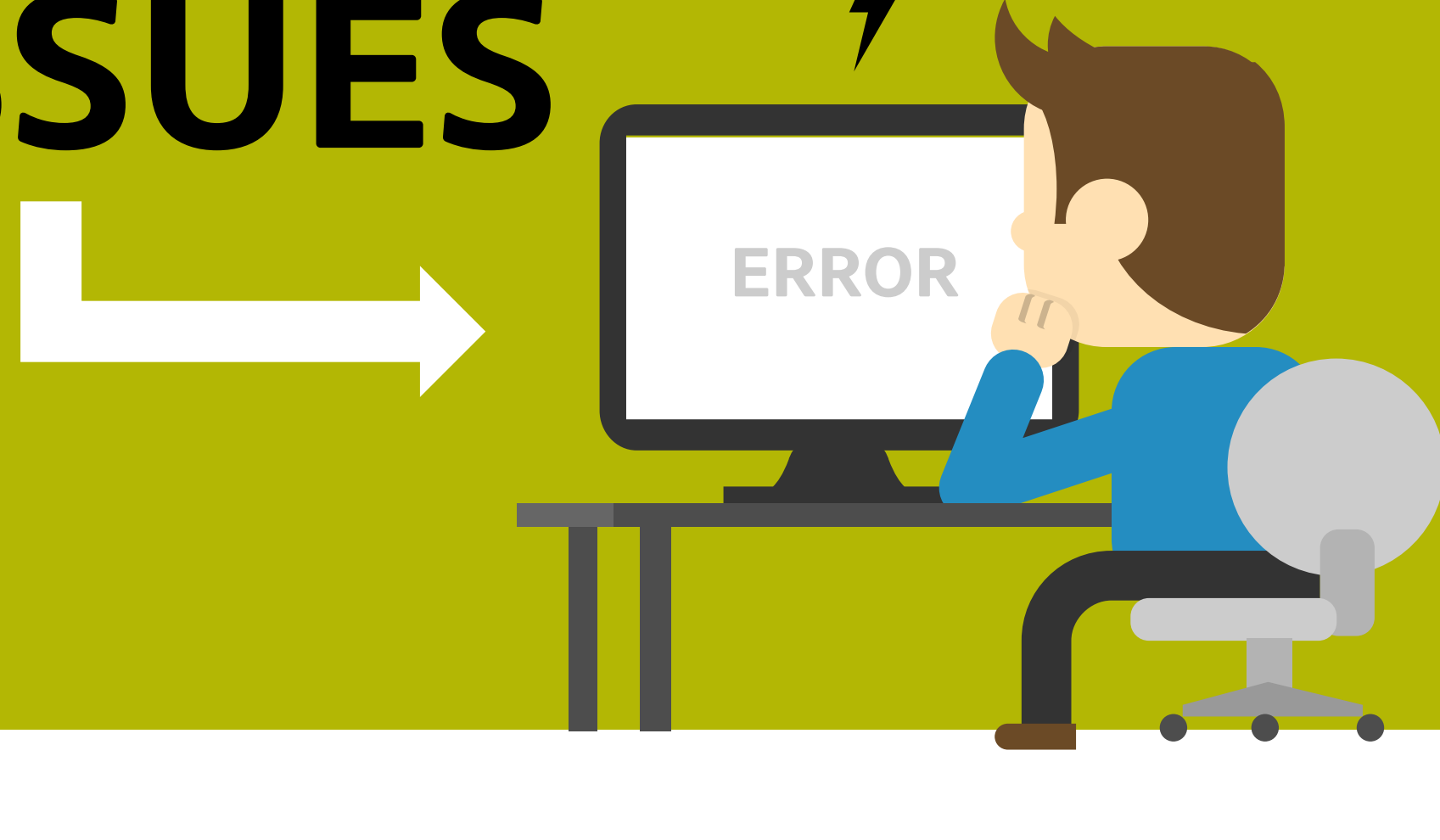


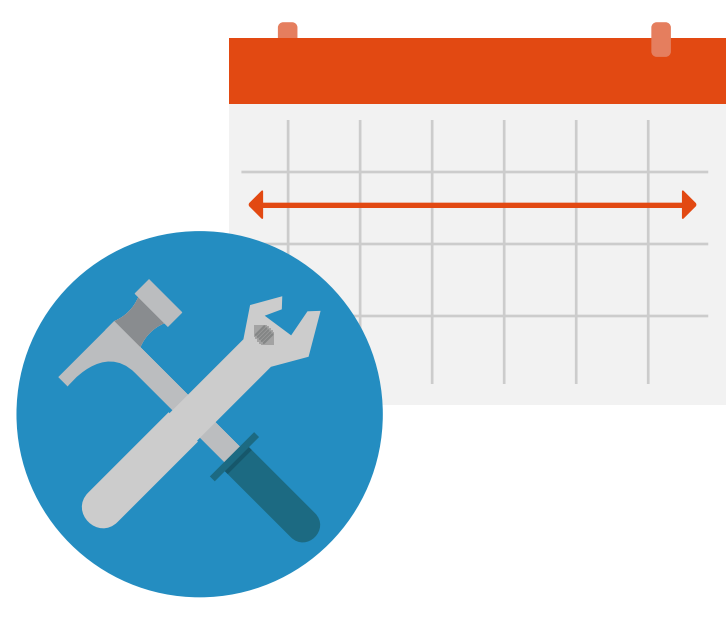
THE COST OF PERFORMANCE ISSUES



59%
OF FORTUNE 500
COMPANIES EXPERIENCE
1.6+ hours
OF DOWNTIME PER WEEK



JUST THE LABOR COMPONENT
OF DOWNTIME COSTS
\$896,000
weekly

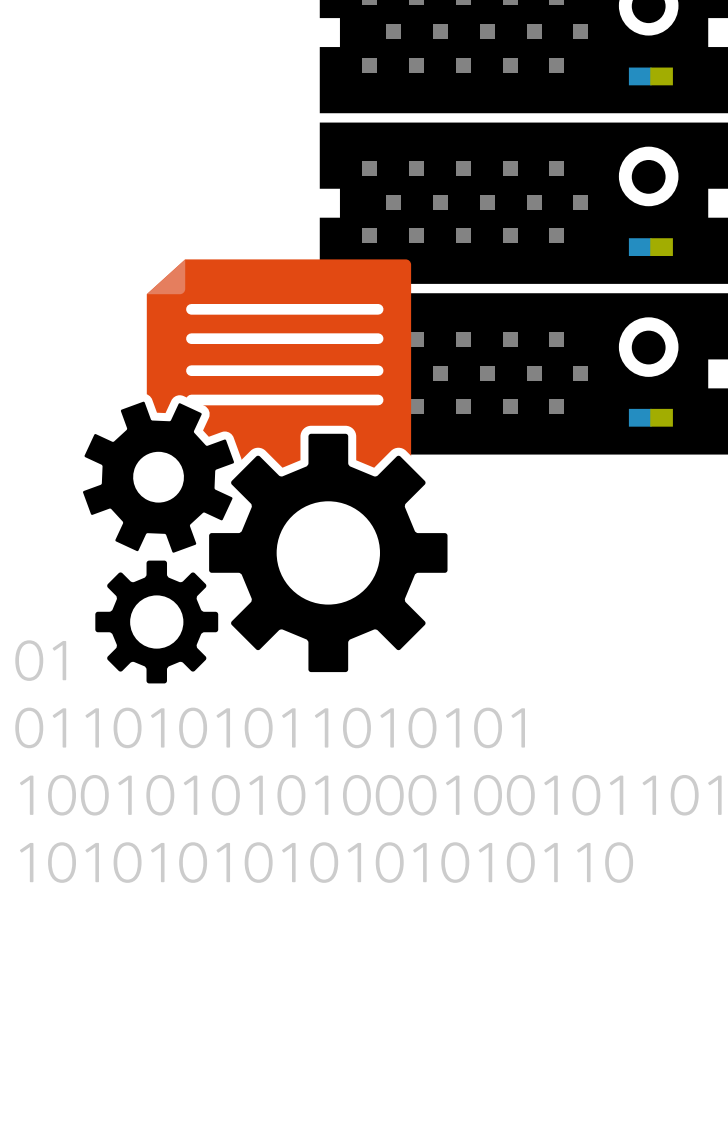


that's more than
\$46 MILLION
PER YEAR, JUST ON LABOR

Across industries, the average
COST OF DATA CENTER DOWNTIME IS

\$7,900
per minute

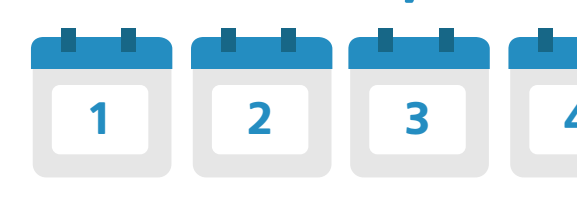
A
41% increase
from \$5,600
in 2010.



UPTIME

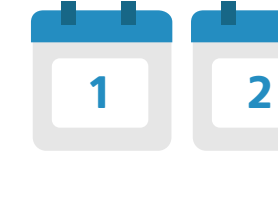
ANNUAL DOWNTIME DAYS

99% = 3.5 days

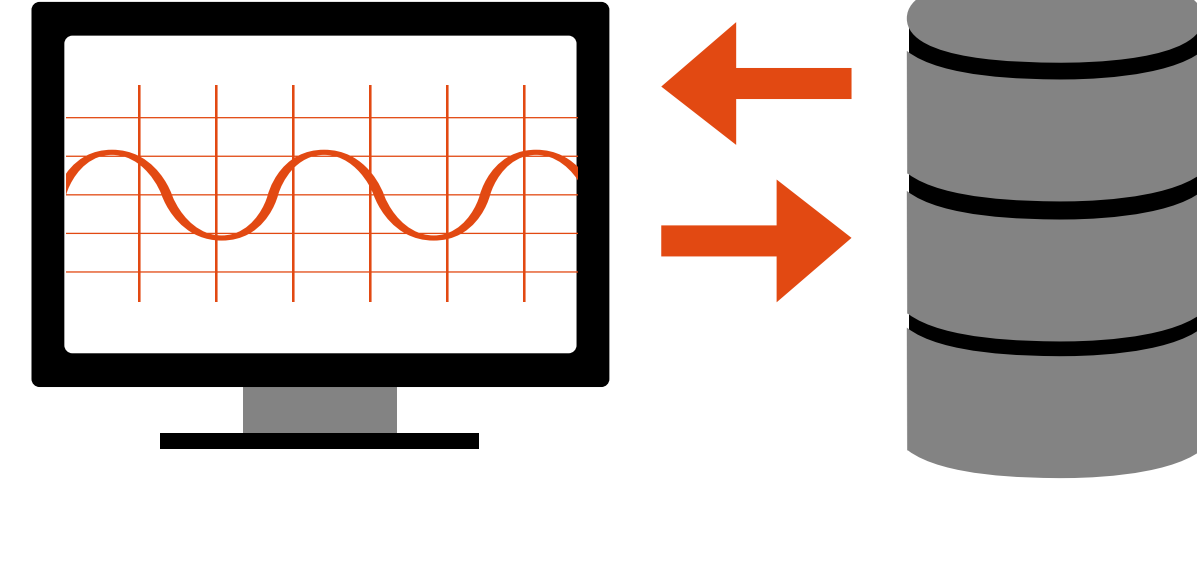


99.5% = 1.83 days

(ALMOST AN HOUR PER WEEK)



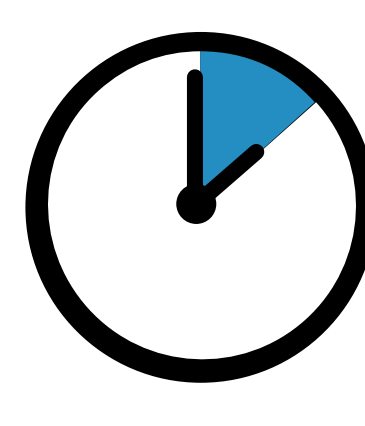
EVEN WITH AN
UPTIME
OF 99.9%



that means you're still down
8.76 hours
PER YEAR



that's
10 minutes
PER WEEK

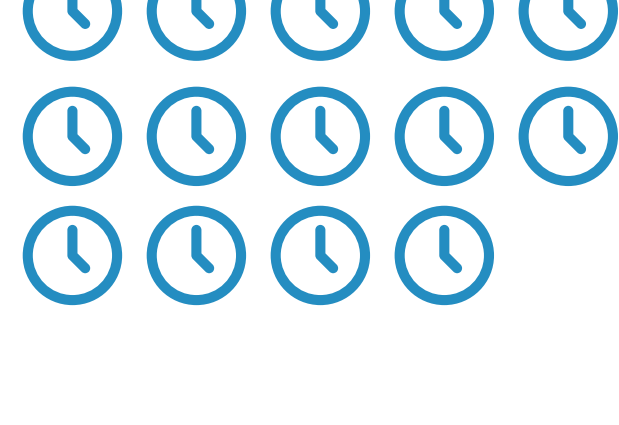


How much revenue do you make
EVERY 10 MINUTES?

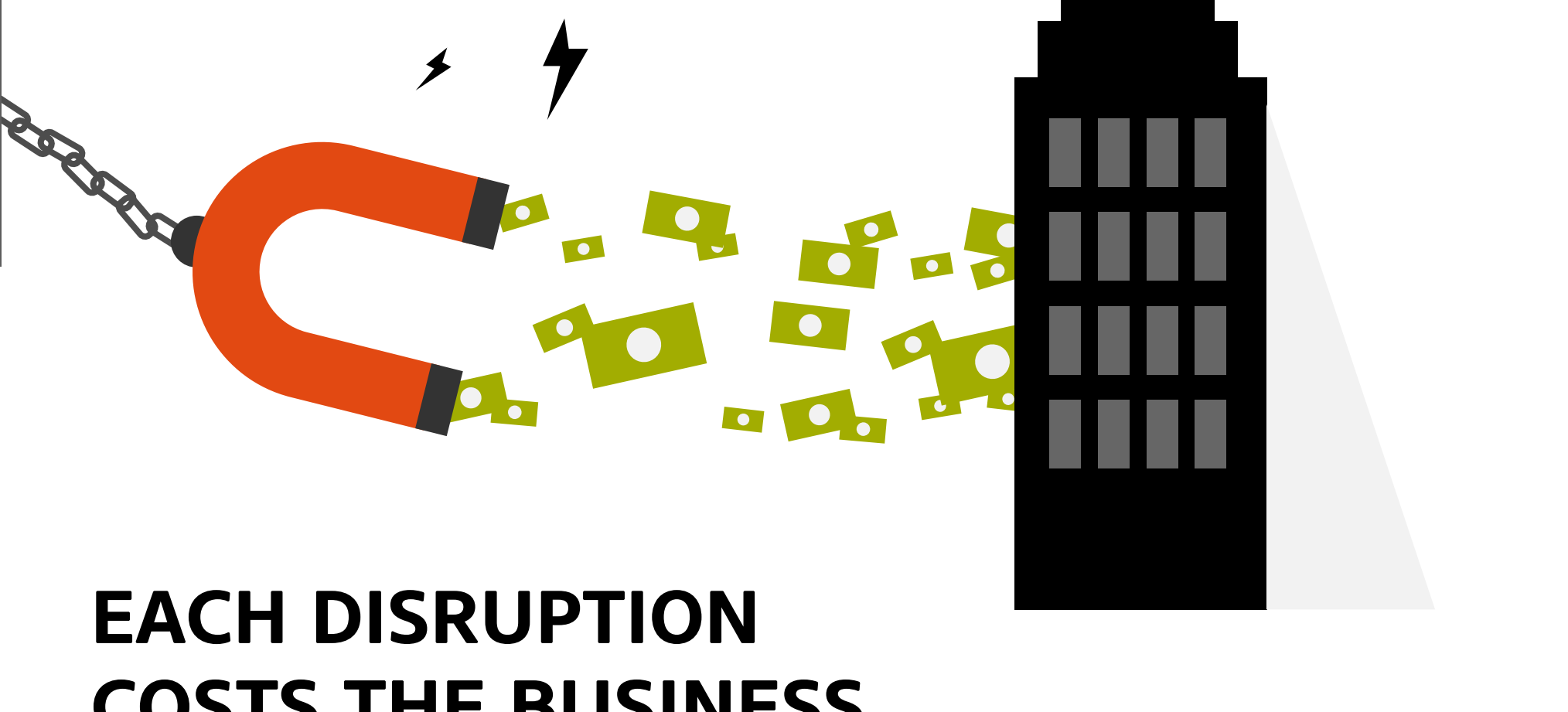
On average,
businesses encounter
**3 INTERRUPTION
EVENTS ANNUALLY**



with each interruption at
4.7 HOURS

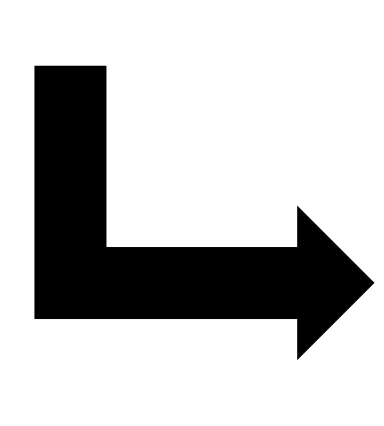


that totals to
14.1 HOURS
ANNUALLY



EACH DISRUPTION
COSTS THE BUSINESS

\$110,000 per hour



that's
\$1,550,000
annually



Sources:
http://www.emersonnetworkpower.com/documents/en-US/Brands/Liebert/Documents/White%20Papers/2013_emerson_data_center_outages_sl-24679.pdf
<http://www.strategiccompanies.com/pdfs/Assessing%20the%20Financial%20Impact%20of%20Downtime.pdf>
<http://www.engriven.com/blog/downtime-outages-and-failures-understanding-their-true-costs.html>
<http://www.datacenterknowledge.com/archives/2013/12/03/study-cost-data-center-downtime-rising/>